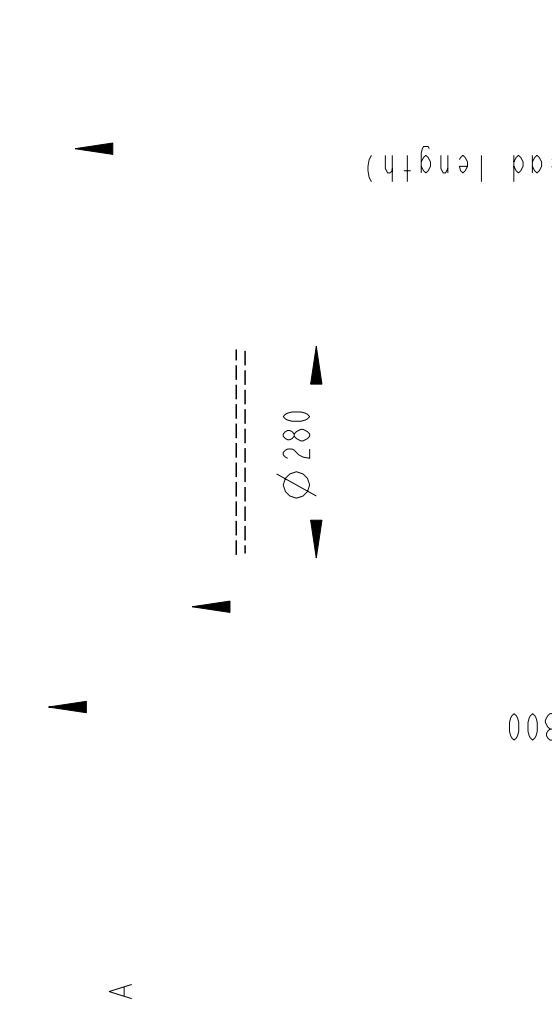
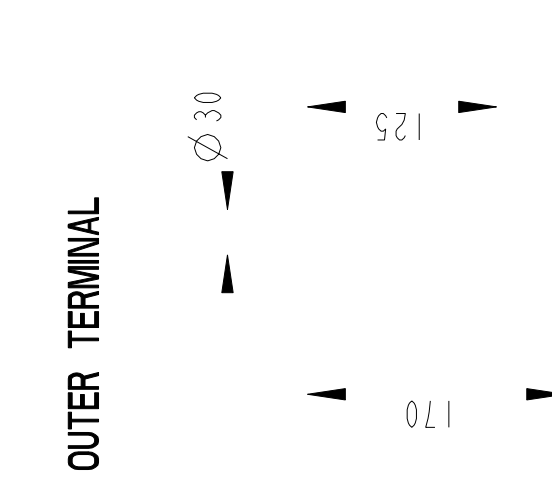
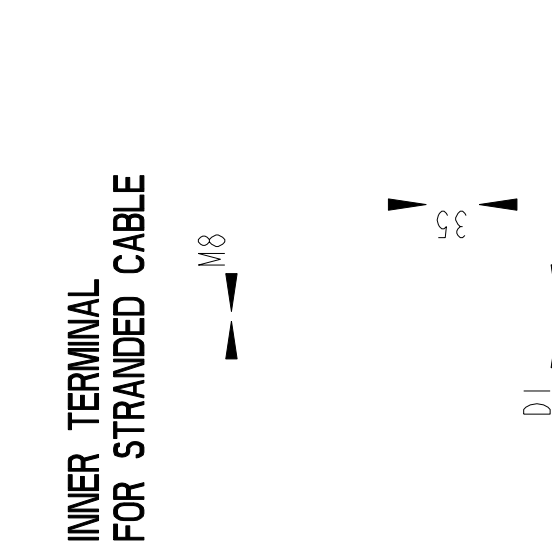


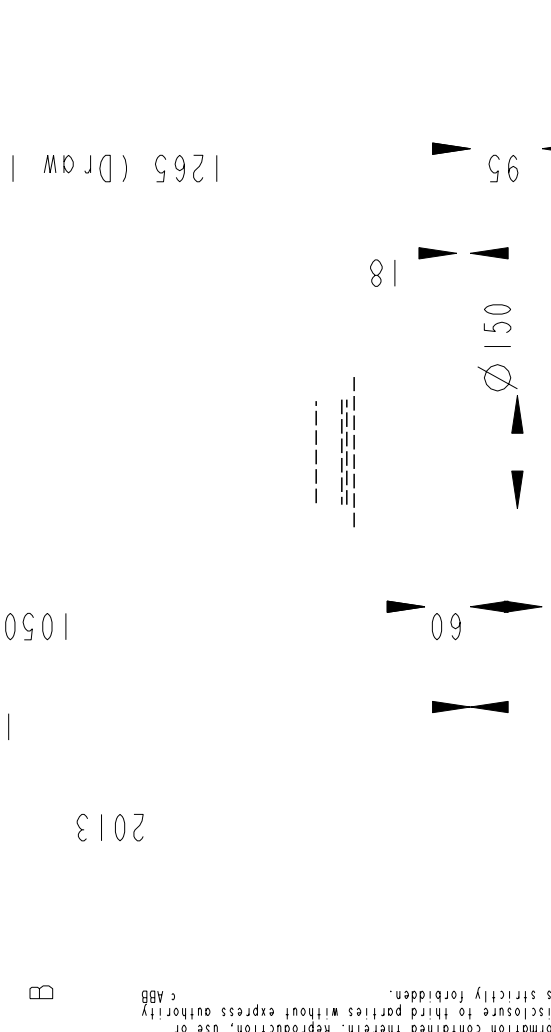
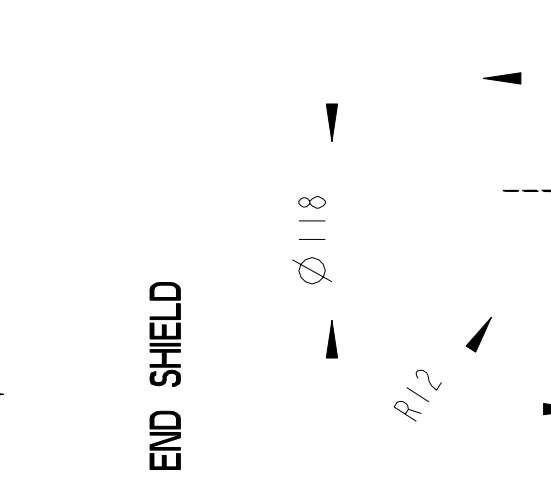
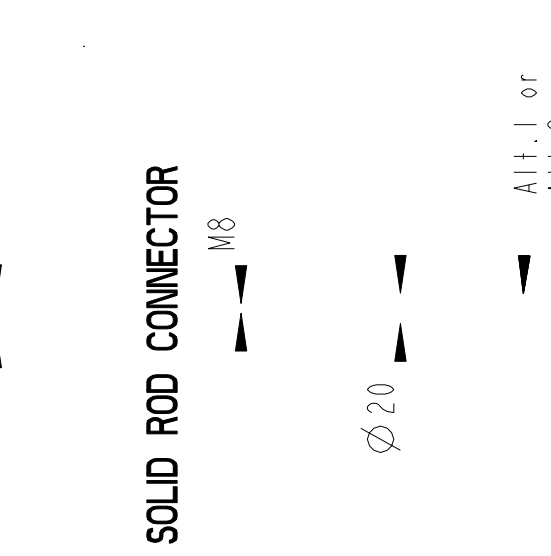
Bushing Data:

Rated Voltage	170	kV
Phase to Ground Voltage	123	kV
Dry Lightning Impulse 1,2/50µs	550	kV
Wet power frequency AC	230	kV
Routine test Imin dry 50Hz	260	kV
Rated Current	800	A
Creepage Distance	3430±100	mm
Creepage Distance Protected	1350	mm
Mass	71	kg



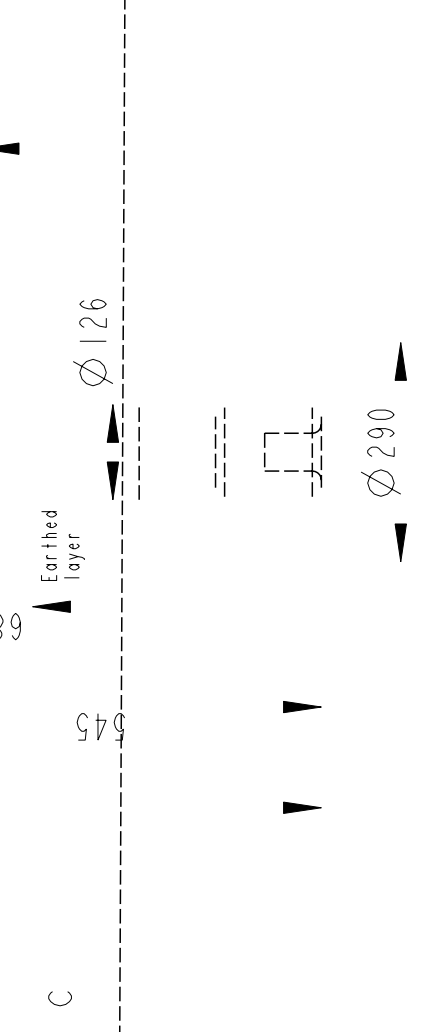
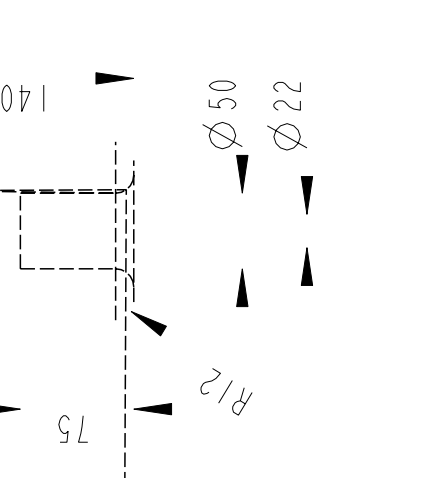
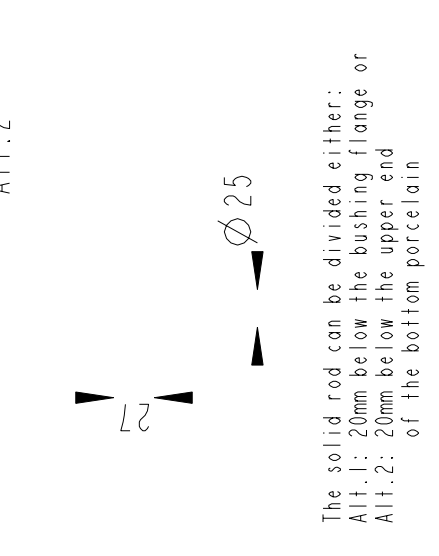
Ordering Data:

BUSHING	COLOUR AIR INSULATOR
LF123189-M	BROWN
-N	LIGHT GREY
OUTER TERMINAL	
LF 170 002-A	Cu, Ø30, L=125
LF 170 001-A	Al, Ø30, L=125
OTHER TYPES ON REQUEST	
INNER TERMINAL FOR STRANDED CABLE	
For brazing	Conductor area
LF 170 011-S	up to 150mm ²
LF 170 011-U	Undrilled with pilot hole Ø5
For crimping or brazing	Conductor area
LF 170 010-M	50mm ²
LF 170 010-N	70mm ²
LF 170 010-L	95mm ²
SOLID ROD CONNECTOR	
LF 170 019 -AR for Alt.1	
N/A for Alt.2	



Bushing Data:

Rated Voltage	170	kV
Phase to Ground Voltage	123	kV
Dry Lightning Impulse 1,2/50µs	550	kV
Wet power frequency AC	230	kV
Routine test Imin dry 50Hz	260	kV
Rated Current	800	A
Creepage Distance	3430±100	mm
Creepage Distance Protected	1350	mm
Mass	71	kg



The solid rod can be divided either:
 Alt.1: 20mm below the bushing flange or
 Alt.2: 20mm below the upper end of the bottom porcelain

Based on	Reg. No.	Title
Prepared	Responsible department	GOB 550-800-0 WITH OIL LEVEL GAUGE LONG END SHIELD
Lövnord	COM/BK	
Approved	Take over department	Language
Johansson		82
Design engineering review	Database	Page
Hedlund		1(1)
ABB	ABB Components	Document No.
		2751369-206

We reserve all rights in this document and in the information contained therein. Reproduction, use or disclosure to third parties without express authority of ABB is strictly forbidden.